

**BPW International**  
**Africa**  
**Regional Conference**  
**Cotonou, Benin**  
**August 9-11, 2007**

7/30/2007

**BPW International**  
ELizabeth Benham, 2<sup>nd</sup> Vice President BPW International





Friends

# BPW International Friends and Fellows



Fellows

**Critical Source of additional revenue  
for BPW International**

**Membership dues are low - €10.5 / year**

**Does not support the required services  
required of an international organization**





# Friends

**For members only - Sponsor Group  
Voluntary - in addition to dues**

**10% goes into a Congress Fund  
for young bpw and disadvantaged members  
also supports administration costs**

**Includes business category  
and Rebates**

**10% of total contributions to friends program  
from the federation / clubs in the country  
= reduction in dues!**





# Friends Africa Region

## Egypt

Dr Amany Asfour

Bronze

Total 150 = €15.00 Rebate for dues





## Friend Invoice January – December 2007

Mail merge info
-----------------

**Friend ID:**    xxxxx  
**Date:**        xxxxx

Thank you very much for contributing as a Friend over the past 12 months. The Friends of BPW are a very special group to the International Federation. As you know, 10% goes towards the Young BPW Congress Fund. Please use this form to renew your Friends Membership. If you need application for new friend, please contact [member.services@bpw-international.org](mailto:member.services@bpw-international.org)

**Liz Benham**, Chair of Friends & Fellow Taskforce

**I wish to continue my commitment to BPW International and renew my Friends subscription.**

You may change to Club or Business Friend or change the level of Friend if you wish.

Occupation	Telephone	e-mail	Birthday (Day/month)

**OR BPW Club or Business Contact details**

Club/Business Name	Position	
Address		
		Country
Nature of Business	Telephone	e-mail

I wish to have the Newsletter:  mailed     e-mailed

Language Preference for the Newsletter:	<input type="checkbox"/> English	<input type="checkbox"/> French	<input type="checkbox"/> Italian	<input type="checkbox"/> Spanish
---	----------------------------------	---------------------------------	----------------------------------	----------------------------------

**Annual Donation**

<input type="checkbox"/> Business	<input type="checkbox"/> Diamond	<input type="checkbox"/> Gold	<input type="checkbox"/> Silver	<input type="checkbox"/> Bronze	<input type="checkbox"/> Friend
€2,000 /\$2,500 /GBP1,300	€1,125 /\$1,500 /GBP750	€750 /\$1,000 /GBP500	€375 /\$500 /GBP250	€150 /\$200 /GBP100	€75 /\$100 /GBP50

I have made payment of €/ \$/ GBP \_\_\_\_\_ to be BPWI Friend in the chosen category for \_\_\_\_\_ year(s) on date \_\_\_\_\_  
(A single payment will be processed to cover the years stated) using the following methods:

**Bank Transfer** (Transfer fee must be covered by sender) Please also advise Friend ID when the fund is transferred.

	<input type="checkbox"/> Sterling (GBP)	<input type="checkbox"/> US Dollars (\$)	<input type="checkbox"/> Euro (€)
Account Name	IFBPW	IFBPW	BPW International
Account Number	60512222	45161254	251-821228.65N
Bank	Barclays Bank, PLC	CITIBANK ,N.A.	UBS AG
IBAN	GB35 BARC 2026 7460 5122 22	-	CH13 0025 1251 8212 2865 N
SWIFTBIC	BARCGB22	CITIUS33	UBSWCHZH80A
Other Code	Sort Code: 20-26-74	ABA Number: 021000089	-
Address	Barclays House, Victoria Street, Douglas, Isle of Man IM99 1AJ, UK	Citibank, N.A., 460 Park Ave at 57 <sup>th</sup> Street New York, NY 10022, USA	Postfach, CH-8098 Zurich SWITZERLAND

**PayPal, MasterCard, Visa, Visa Electron, EuroCard, American Express**

Click the button "BPW Pay Online" on the first page of [www.bpw-international.org](http://www.bpw-international.org), then follow the payment instruction. Invoice number, Friend ID required to make payment appear on the top right of this Invoice. Payment in EURO, USD and GBP are accepted.

**Deposit Cheque:** Friends in UK, USA or Switzerland can deposit cheque at Barclays (UK), at Citibank (USA) or at UBS (Switzerland) to account as specify above, then send deposit slip with a copy of this invoice to President's office (see details below). **DO NOT MAIL CHEQUE.**

**Cash:** pay BPW International's Executive Board member: (name) \_\_\_\_\_ (Signature) \_\_\_\_\_

**Bank Draft / Cash / Others:** Please consult [presidents.office@bpw-international.org](mailto:presidents.office@bpw-international.org) before making other forms of payment.



# **BPW International Fellows**

**For members & non members  
Men and Women**

**Raises visibility and credibility of BPW**

**For accomplished people in all fields  
Education, Sciences, Health, Business**

**Become resources and experts for BPW**

**Nomination / Application process  
Approval by Executive Board  
Fee Euro €1000**





# BPW International Fellows

The International Federation of Business and Professional Women - BPW International, established in 1930 celebrates the vision of our founder Dr Lena Madesin Phillips with the enhancement of the International Fellows program which, first introduced in 1996 recognizes the achievements of individuals in any sphere of business or professional life and pools their experience and ideas as resources to further the noble aspirations of the organization.

The BPW International Fellowship is open to members or non members of BPW International both men and women. They are leaders in the private or public sector who have achieved excellence and promote the interest of women in businesses and the professions and subscribe to the aims of the organization.

BPW International Fellows raise and strengthen the visibility of BPW International, enabling it to be one of the most influential, worlds leading, women's organization contributing their knowledge and expertise to its development, growth and empowerment with an unparalleled opportunity to influence greater recognition for women in business and the professions.

Membership is accepted through a nomination and or application process subject to approval by the executive board along with a onetime fee of €1000 Euro which is placed in the international projects fund for various BPW educational and economic empowerment projects.

In return, Fellows enjoy international recognition, friendships, networking and interaction with interesting and influential people from all over the world.

Non - member International Fellows cannot run for office nor exercise the right to vote.

The BPW International Fellows receive a special pin and benefits such as BPW International publications, digital and print media listings, opportunities to attend regional conferences and international congresses and invitations to exclusive functions at the international Congresses.

Applications are available from BPW Affiliates, Associate clubs or members and can also be downloaded from the website, [www.bpw-international.org](http://www.bpw-international.org)

For more information please contact :

Elizabeth Benham , 2<sup>nd</sup> Vice President , Chair – BPW International Fellows.

Ph +1 631 422-7849 \* Fax +1 631 792-1192 \* email: [liz.benham@bpw-international.org](mailto:liz.benham@bpw-international.org)



FELLOWS

# BPW International Fellows

## APPLICATION FORM

**Nominated by:**

**Name and Country**

Federation  
Associate Club  
BPW Member

---

---

---

Full Name of Applicant: \_\_\_\_\_

BPW Member: YES \_\_\_\_\_ NO \_\_\_\_\_

Business Address: \_\_\_\_\_  
\_\_\_\_\_

City: \_\_\_\_\_ Country: \_\_\_\_\_

Phone/ Fax \_\_\_\_\_ Email \_\_\_\_\_

Home Address: \_\_\_\_\_

Phone/ Fax/ email \_\_\_\_\_

Occupational Field and Job Title \_\_\_\_\_

Key Achievements: \_\_\_\_\_  
\_\_\_\_\_

Length of time in the field \_\_\_\_\_ Signature: \_\_\_\_\_

Please attach your photo and CV / profile illustrating your achievements.  
The onetime application fee of €1000 Euro is payable to BPW International when application is accepted.

Nominated by (Name): \_\_\_\_\_ Position: \_\_\_\_\_

Phone: \_\_\_\_\_ E-mail: \_\_\_\_\_

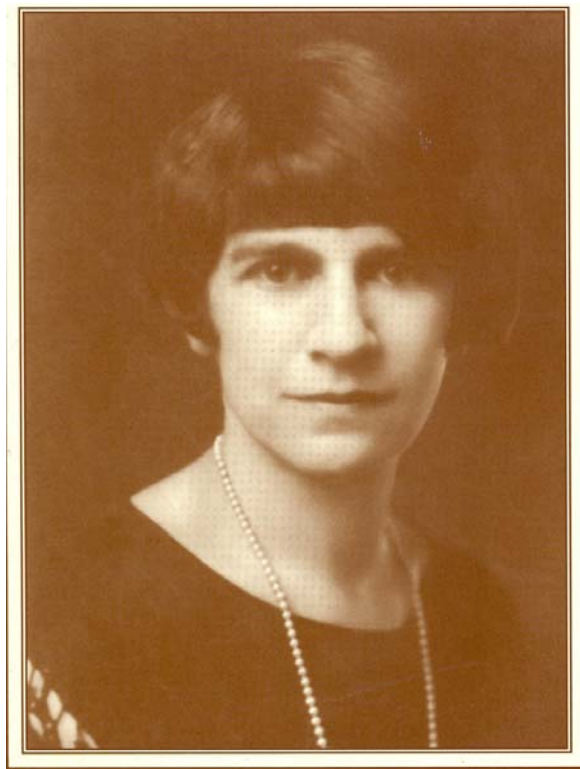
Please fax this form and documents to Elizabeth Benham, Chair – BPW International Fellowship  
Fax: +1 631 792-1192 \* PH: +1 631 422-7849 \* email: liz.benham@bpw-international.org

# BPW International Fellows

Honorary Member – Esther Hymer

1898-2001

New Jersey

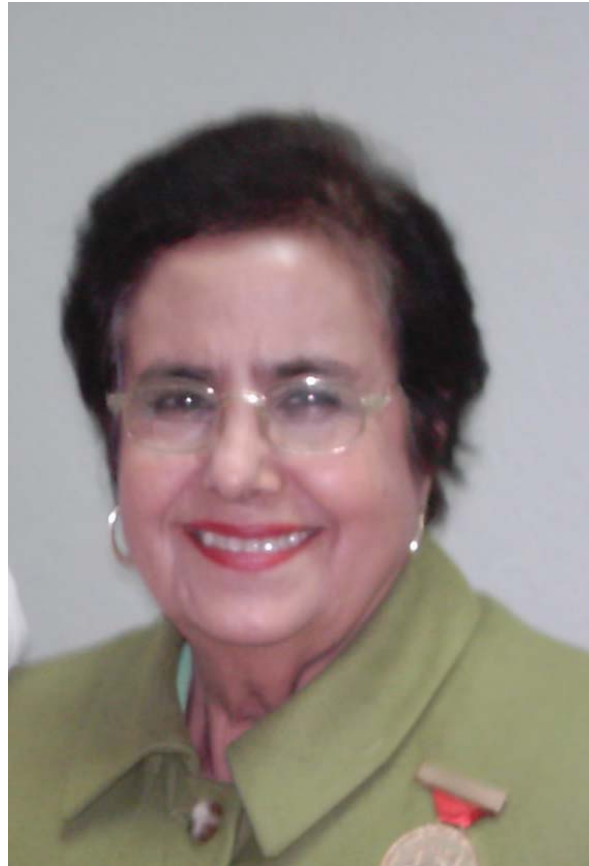


BPW International UN Representative 1945-1998



# **BPW International Fellows**

Professor Sylvia Salazar Salazar  
La Paz, Mexico



**Director Conalep School of Nursing  
La Paz, Mexico**

**BPW International**

7/30/2007

ELizabeth Benham, 2<sup>nd</sup> Vice President BPW International



# **BPW International Fellows**

Kenneth Herman  
New York



**President**

**Kenneth J Herman Inc Construction Company**

7/30/2007

ELizabeth Benham, 2<sup>nd</sup> Vice President BPW International



# FRIENDS



Friends

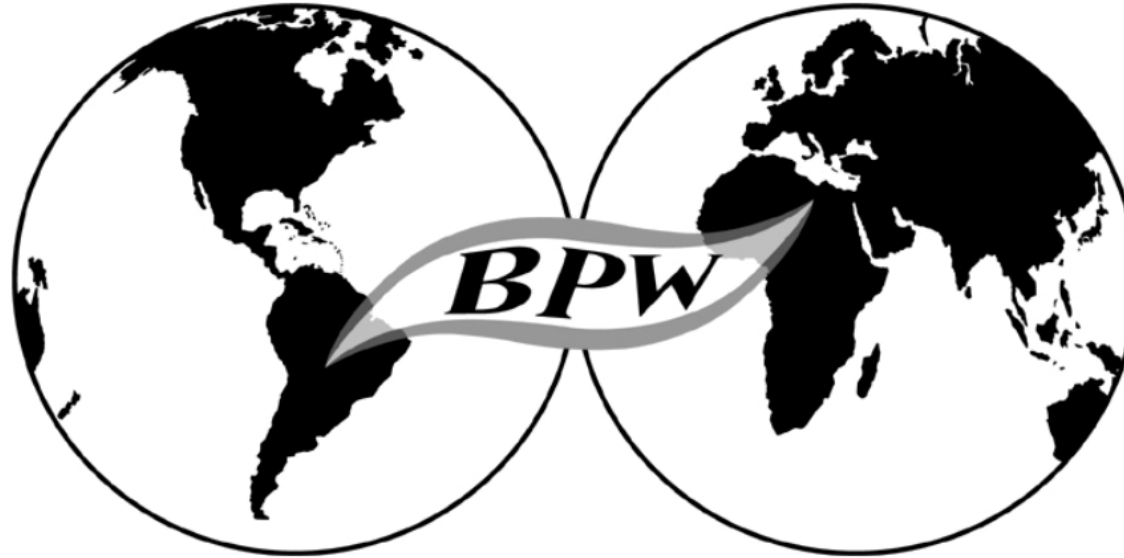
# FELLOWS



Fellows

**Support and Promote them  
for a stronger  
vibrant organization!**





**THANK YOU!**

